

THIS DRAWING AND THE INFORMATION CONTAINED ARE THE PROPERTY OF COSELLA DÖRKEN. THEY ARE NOT TO BE COPIED OR USED IN ANY WAY WITHOUT OUR WRITTEN PERMISSION

THIS IS A PROPOSAL DRAWING. DO NOT USE FOR CONSTRUCTION UNTIL APPROVED BY CONTRACTOR OR CONSULTING ENGINEER

APP'D BY:

DATE:

TITLE:

TYPICAL WALL DETAIL WITH DELTA®-DRAIN / DELTA®-FOOTING BARRIER / EXTERIOR EXTRUDED POLYSTYRENE INSULATION CLIMATE ZONE 6 (2012 IECC)

DRAWN BY: KRZYSZTOF APRIASZ.

CHKD BY:

DATE: November 1, 2011

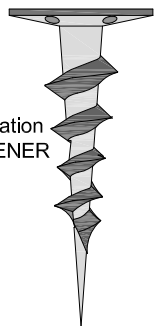
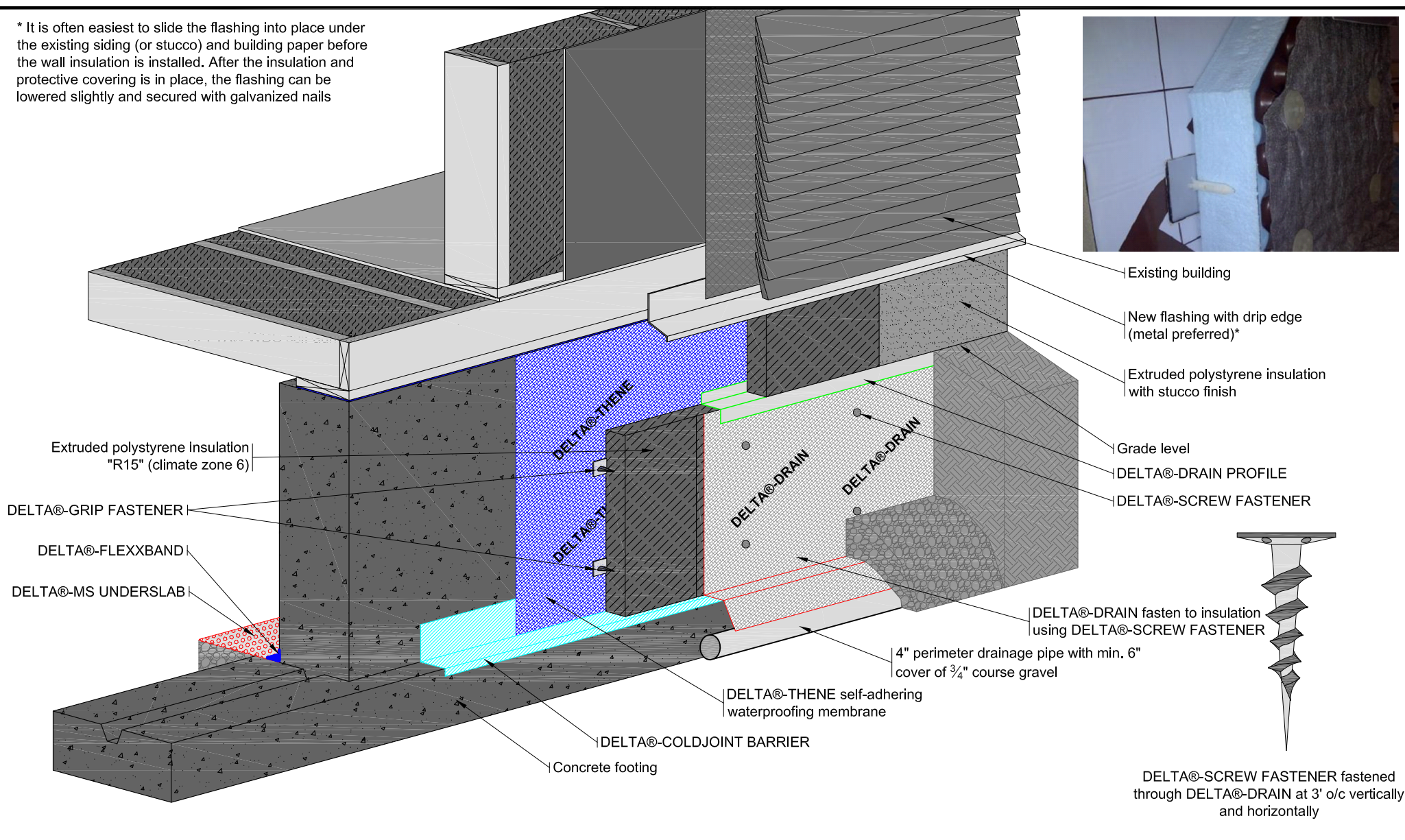
SCALE: NTS

FILE NAME: DELTA-DRAIN1a.dwg

COSELLA DÖRKEN

4655 DELTA WAY BEAMSVILLE, ON. L0R 1B4 CANADA
TEL# 1-888-433-5824 OR 1-905-563-3255

* It is often easiest to slide the flashing into place under the existing siding (or stucco) and building paper before the wall insulation is installed. After the insulation and protective covering is in place, the flashing can be lowered slightly and secured with galvanized nails



DELTA®-SCREW FASTENER fastened through DELTA®-DRAIN at 3' o/c vertically and horizontally

THIS DRAWING AND THE INFORMATION CONTAINED ARE THE PROPERTY OF COSELLA DÖRKEN. THEY ARE NOT TO BE COPIED OR USED IN ANY WAY WITHOUT OUR WRITTEN PERMISSION

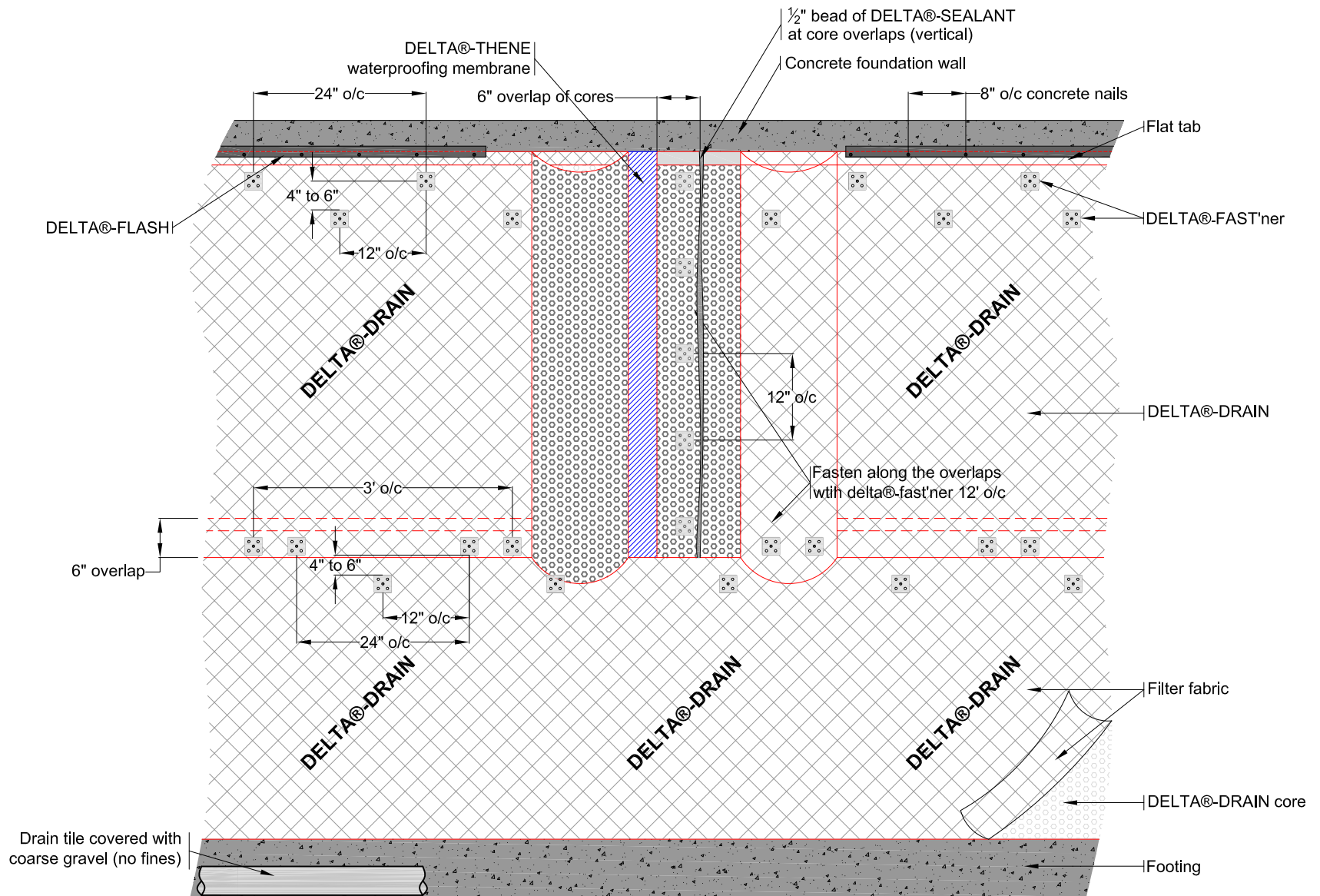
COSELLA DÖRKEN

4655 DELTA WAY BEAMSVILLE, ON. L0R 1B4 CANADA
TEL# 1-888-433-5824 OR 1-905-563-3255

THIS IS A PROPOSAL DRAWING. DO NOT USE FOR CONSTRUCTION UNTIL APPROVED BY CONTRACTOR OR CONSULTING ENGINEER

TITLE: **TYPICAL CRAWLSPACE RETROFIT DETAIL WITH EXTERIOR EXTRUDED POLYSTYRENE INSULATION CLIMATE ZONE 6 (2012 IECC)**

APP'D BY: _____ DATE: _____ DRAWN BY: KRZYSZTOF APRIASZ. CHKD BY: _____ DATE: November 3, 2011 SCALE: NTS FILE NAME: DELTA-DRAIN1b.dwg



THIS DRAWING AND THE INFORMATION CONTAINED ARE THE PROPERTY OF COSELLA DÖRKEN THEY ARE NOT TO BE COPIED OR MISUSED IN ANY WAY WITHOUT OUR WRITTEN PERMISSION

THIS IS A PROPOSAL DRAWING DO NOT USE FOR CONSTRUCTION UNTIL APPROVED BY CONTRACTOR OR CONSULTING ENGINEER

APP'D BY:

DATE:

TITLE:

DRAWN BY: KRZYSZTOF A.

CHKD BY:

DATE: March 3, 2010

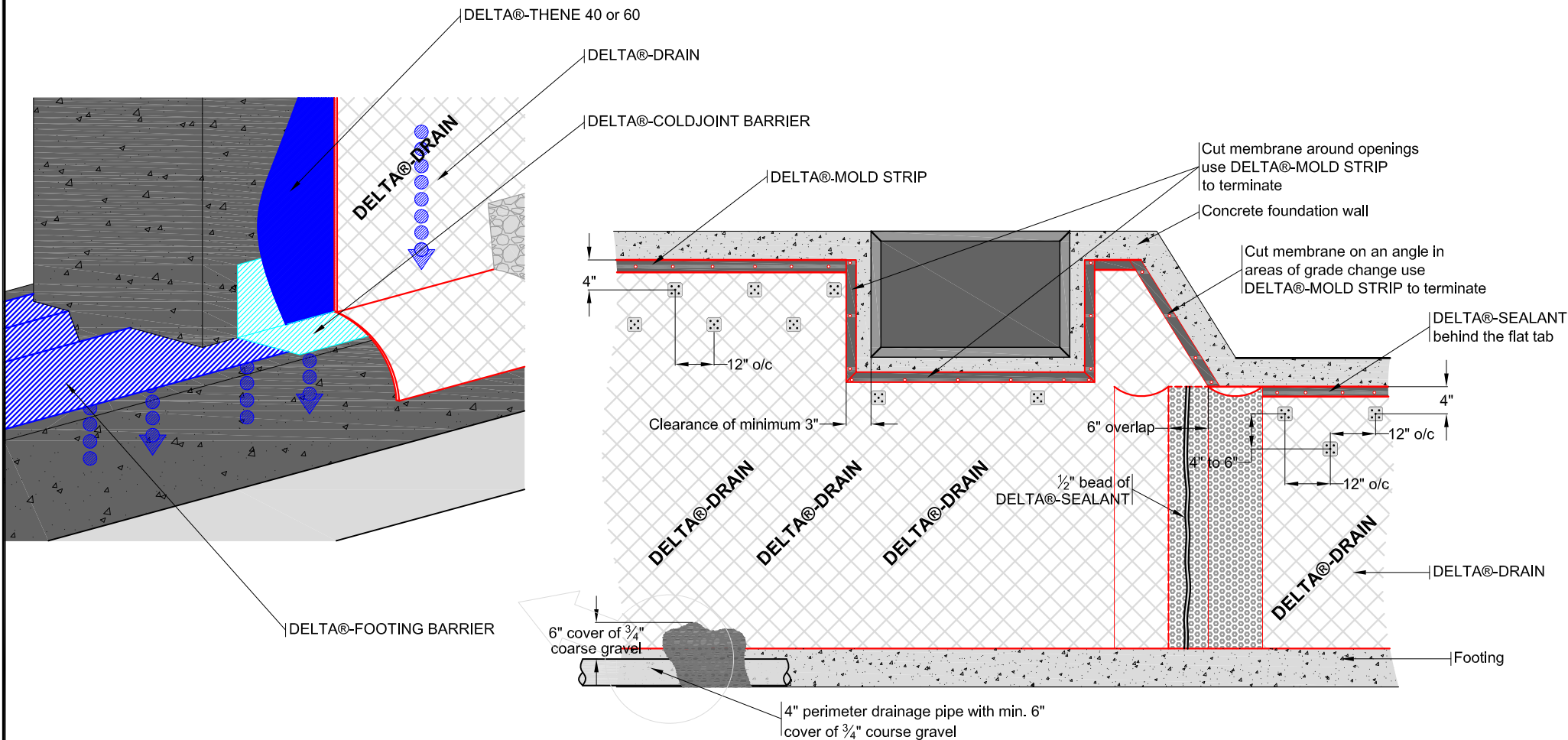
SCALE: NTS

FILE NAME: DELTA-DRAIN2.dwg

COSELLA DÖRKEN

4655 DELTA WAY BEAMSVILLE, ON. L04 1B4 CANADA
TEL# 1888-433-5824 OR 1-905-563-3255

VERICAL/HORIZONTAL OVERLAPS



THIS DRAWING AND THE INFORMATION CONTAINED ARE THE PROPERTY OF COSELLA DÖRKEN. THEY ARE NOT TO BE COPIED OR USED IN ANY WAY WITHOUT OUR WRITTEN PERMISSION

THIS IS A PROPOSAL DRAWING. DO NOT USE FOR CONSTRUCTION UNTIL APPROVED BY CONTRACTOR OR CONSULTING ENGINEER

APP'D BY:

DATE:

TITLE:

DELTA®-DRAIN INSTALALTION DETAIL ON POURED CONCRETE FOUNDATION WALL

DRAWN BY: KRZYSZTOF APRIASZ.

CHKD BY:

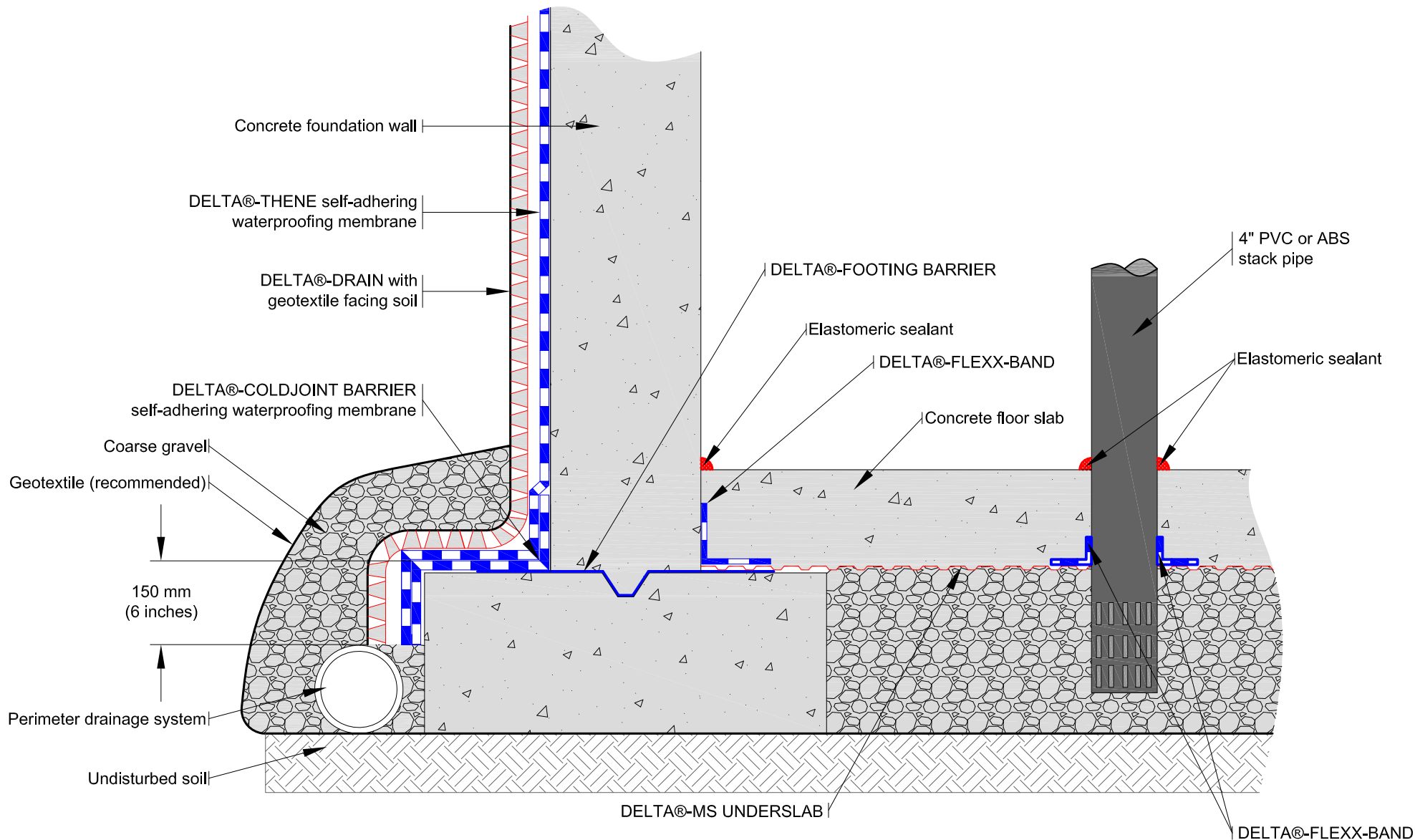
DATE: March 5, 2010

SCALE: NTS

FILE NAME: DELTA-DRIAN3.dwg

COSELLA DÖRKEN

4655 DELTA WAY BEAMSVILLE, ON. L0R 1B4 CANADA
TEL# 1-888-433-5824 OR 1-905-563-3255



THIS DRAWING AND THE INFORMATION CONTAINED ARE THE PROPERTY OF COSELLA-DÖRKEN. THEY ARE NOT TO BE COPIED OR USED IN ANY WAY WITHOUT OUR WRITTEN PERMISSION

THIS IS A PROPOSAL DRAWING. DO NOT USE FOR CONSTRUCTION UNTIL APPROVED BY CONTRACTOR OR CONSULTING ENGINEER

APP'D BY:

DATE:

TITLE:

SOIL GAS VENTILATION SYSTEM WITH FOUNDATION WALL AND FLOOR SLAB AT FOOTING LEVEL (NEW CONSTRUCTION)

DRAWN BY: KRZYSZTOF APRIASZ.

CHKD BY:

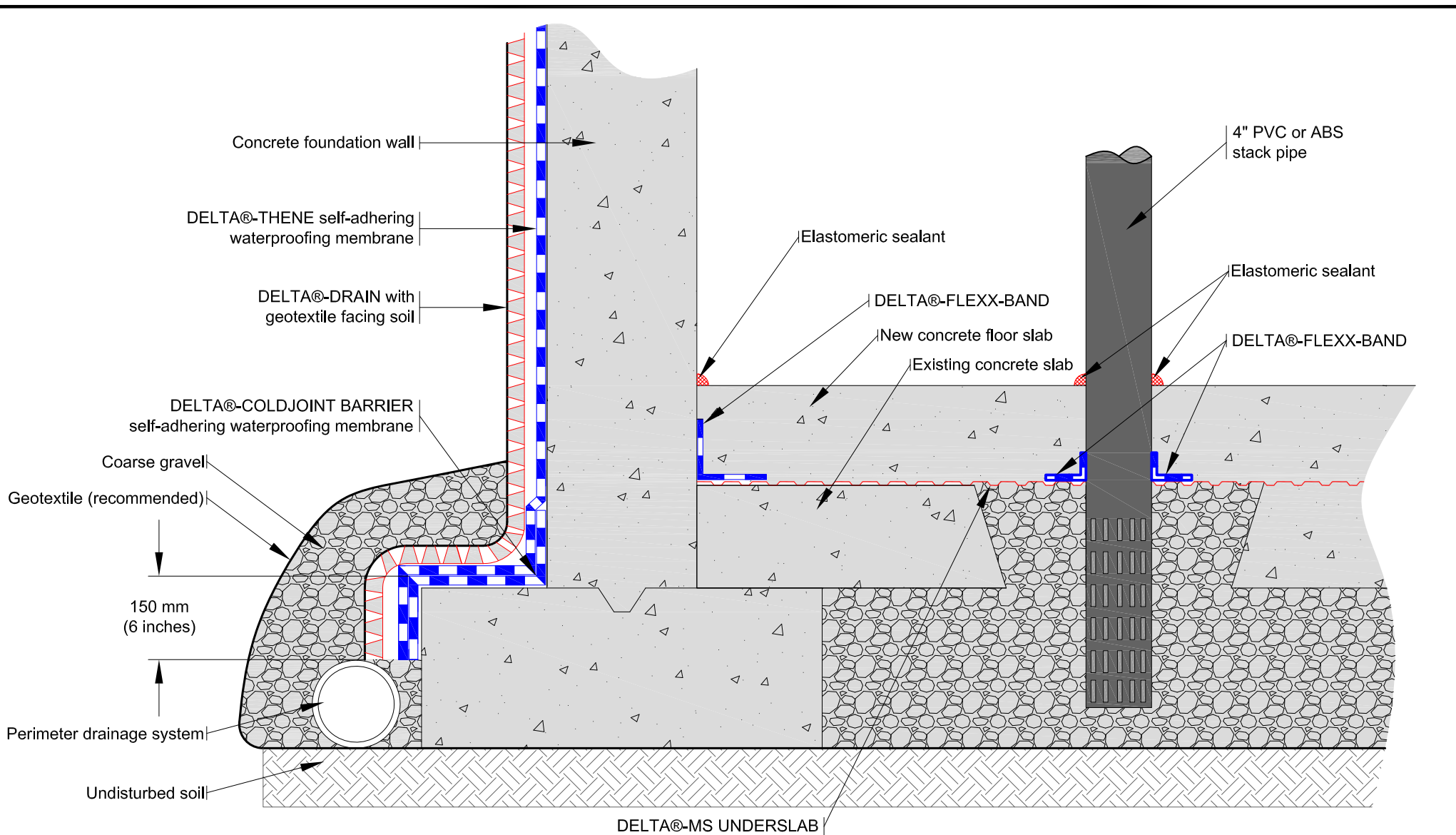
DATE: April 5, 2011

SCALE: NTS

FILE NAME: DELTA-MS_SoilGas3.dwg

COSELLA DÖRKEN

4655 DELTA WAY BEAMSVILLE, ON. L0R 1B4 CANADA
TEL# 1-888-433-5824 OR 1-905-563-3255



THIS DRAWING AND THE INFORMATION CONTAINED ARE THE PROPERTY OF COSELLA-DÖRKEN. THEY ARE NOT TO BE COPIED OR USED IN ANY WAY WITHOUT OUR WRITTEN PERMISSION

THIS IS A PROPOSAL DRAWING. DO NOT USE FOR CONSTRUCTION UNTIL APPROVED BY CONTRACTOR OR CONSULTING ENGINEER

APP'D BY:

DATE:

TITLE:

SOIL GAS VENTILATION SYSTEM WITH FOUNDATION WALL AND EXISTING FLOOR SLAB AT FOOTING LEVEL (RETROFIT)

DRAWN BY: KRZYSZTOF APRIASZ.

CHKD BY:

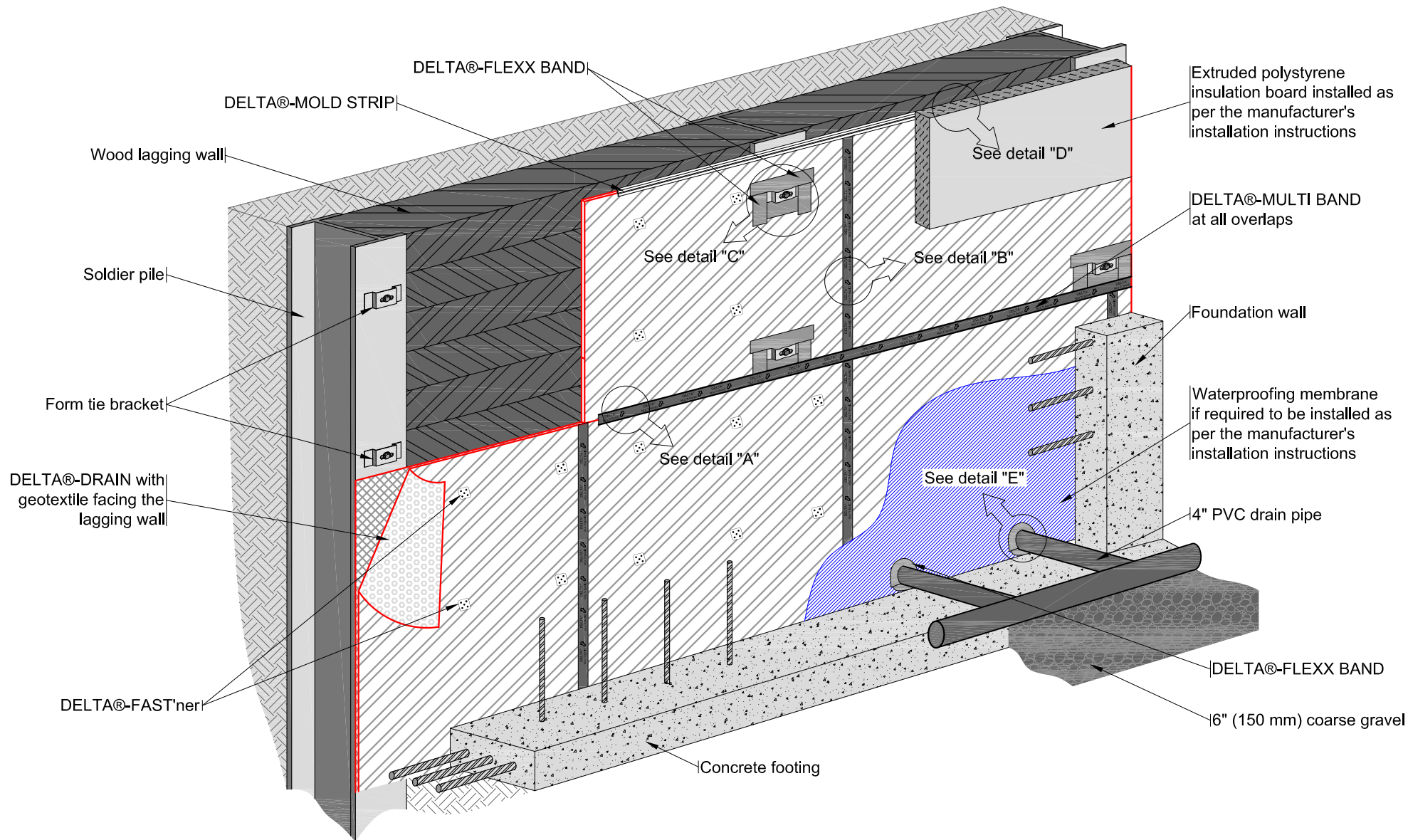
DATE: April 5, 2011

SCALE: NTS

FILE NAME: DELTA-MS_SoilGas4.dwg

COSELLA DÖRKEN

4655 DELTA WAY BEAMSVILLE, ON. L0R 1B4 CANADA
TEL# 1-888-433-5824 OR 1-905-563-3255



THIS DRAWING AND THE INFORMATION CONTAINED ARE THE PROPERTY OF COSELLA-DÖRKEN. THEY ARE NOT TO BE COPIED OR USED IN ANY WAY WITHOUT OUR WRITTEN PERMISSION

THIS IS A PROPOSAL DRAWING. DO NOT USE FOR CONSTRUCTION UNTIL APPROVED BY CONTRACTOR OR CONSULTING ENGINEER

APP'D BY:

DATE:

TITLE:

TYPICAL SOLDIER PILE WALL WITH DELTA®-DRAIN INSTALLATION DETAIL 1 OF 4

DRAWN BY: KRZYSZTOF APRIASZ.

CHKD BY:

DATE: October 5, 2011

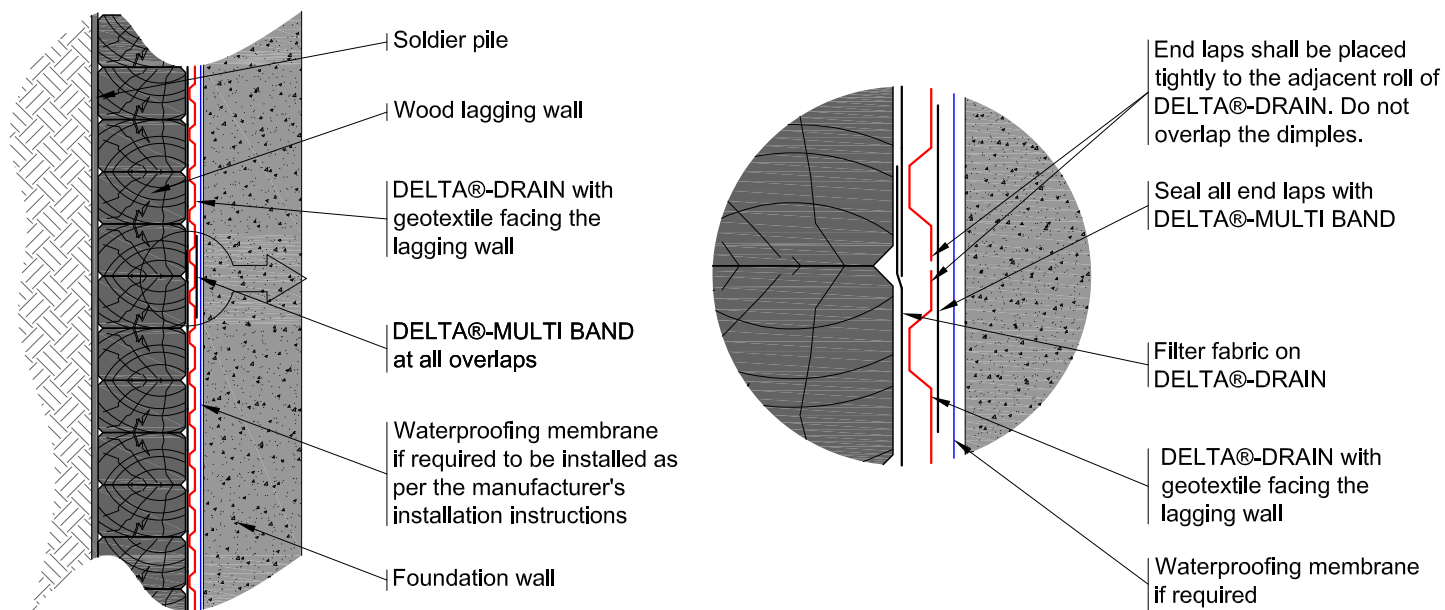
SCALE: NTS

FILE NAME: DELTA-DRAIN_6.dwg

COSELLA DÖRKEN

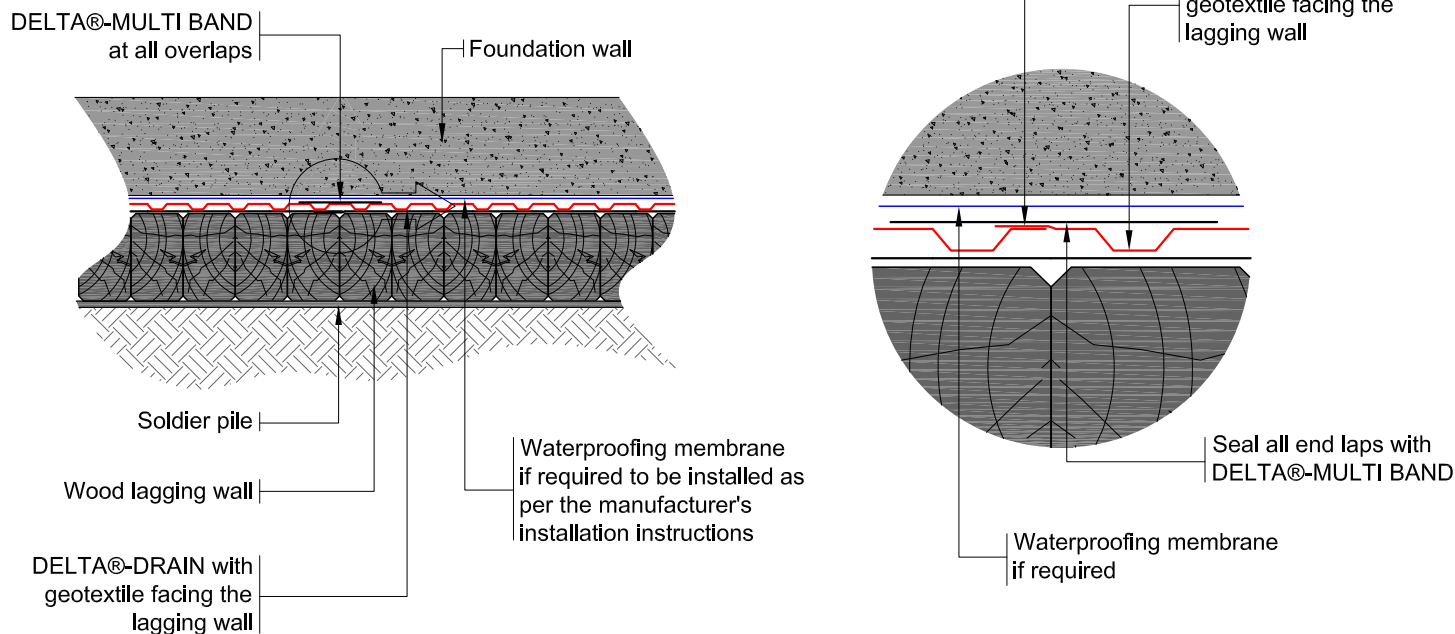
4655 DELTA WAY BEAMSVILLE, ON. L0R 1B4 CANADA
TEL# 1-888-433-5824 OR 1-905-563-3255

DETAIL 'A' HORIZONTAL OVERLAPS



DETAIL 'B' VERTICAL OVERLAPS

Side laps shall be placed tightly to the adjacent roll of DELTA®-DRAIN. Overlap the flat tab only on to the adjacent roll.



THIS DRAWING AND THE INFORMATION CONTAINED ARE THE PROPERTY OF COSELLA DÖRKEN. THEY ARE NOT TO BE COPIED OR MISUSED IN ANY WAY WITHOUT OUR WRITTEN PERMISSION

COSELLA DÖRKEN

4655 DELTA WAY BEAMSVILLE, ON. L0R 1B4 CANADA
TEL# 1-888-433-5824 OR 1-905-563-3255

THIS IS A PROPOSAL DRAWING. DO NOT USE FOR CONSTRUCTION UNTIL APPROVED BY CONTRACTOR OR CONSULTING ENGINEER

TITLE:

TYPICAL SOLDIER PILE WALL WITH DELTA®-DRAIN
INSTALLATION DETAIL 2 OF 4

APP'D BY:

DATE:

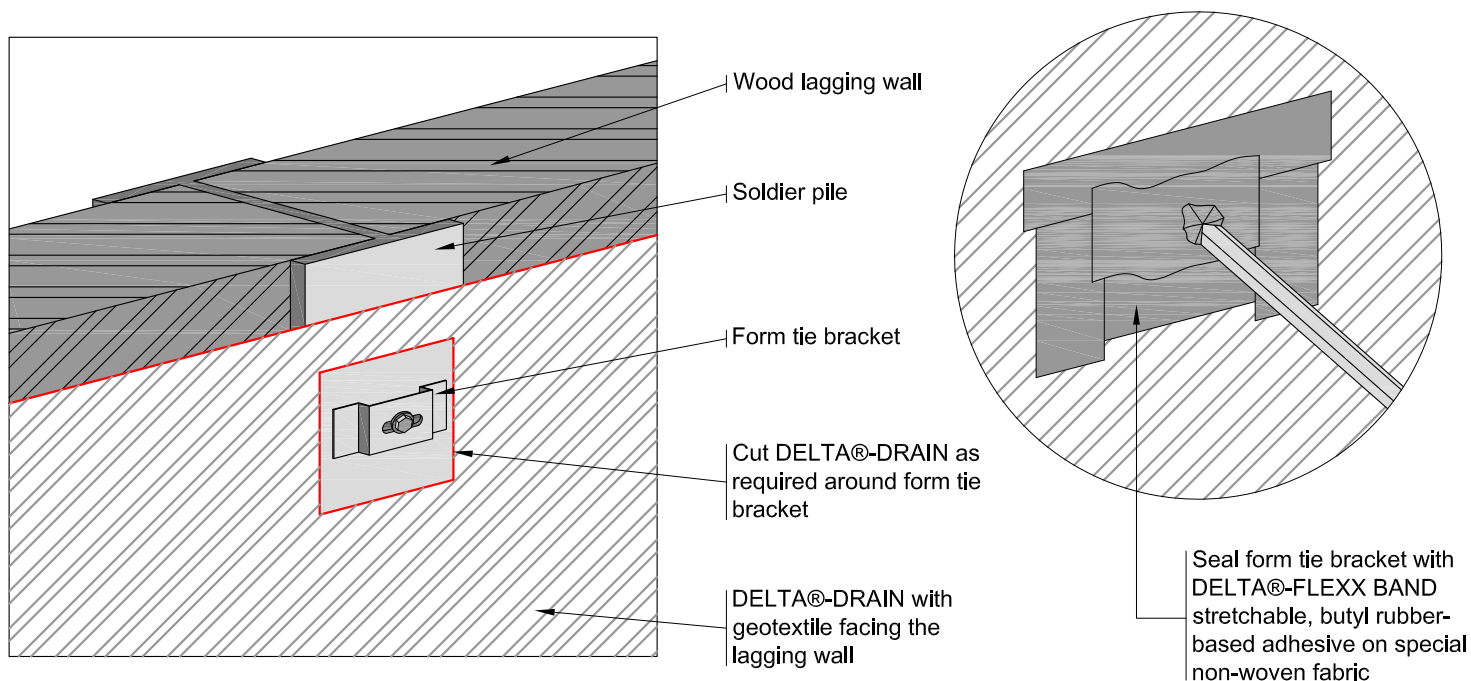
DRAWN BY: KRZYSZTOF APRIASZ.

DATE: October 5, 2011

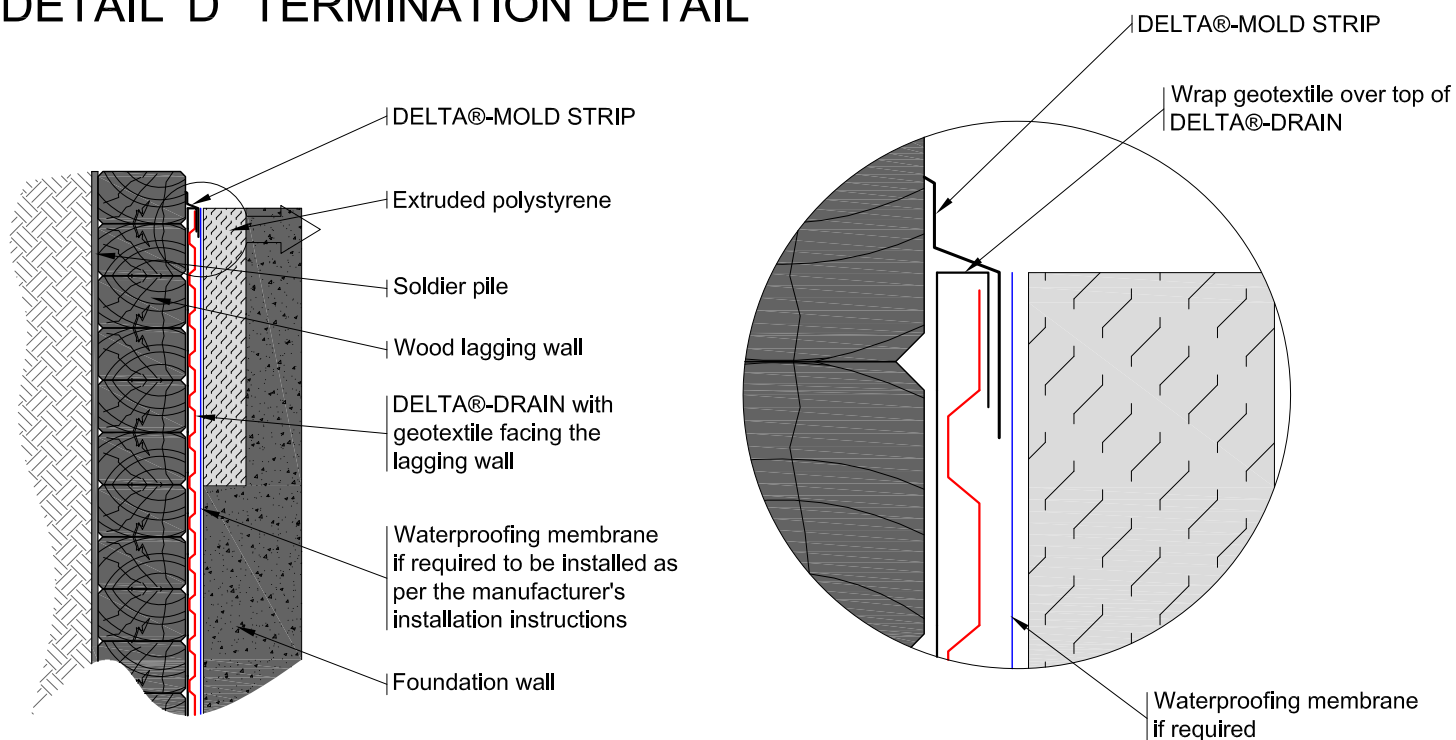
SCALE: NTS

FILE NAME: DELTA-DRAIN_6a.dwg

DETAIL 'C' TIE BRACKET DETAIL



DETAIL 'D' TERMINATION DETAIL



THIS DRAWING AND THE INFORMATION CONTAINED ARE THE PROPERTY OF COSELLA DÖRKEN. THEY ARE NOT TO BE COPIED OR MISUSED IN ANY WAY WITHOUT OUR WRITTEN PERMISSION

COSELLA DÖRKEN

4655 DELTA WAY BEAMSVILLE, ON. L0R 1B4 CANADA
TEL# 1-888-433-5824 OR 1-905-563-3255

THIS IS A PROPOSAL DRAWING. DO NOT USE FOR CONSTRUCTION UNTIL APPROVED BY CONTRACTOR OR CONSULTING ENGINEER

TITLE:

TYPICAL SOLDIER PILE WALL WITH DELTA®-DRAIN
INSTALLATION DETAIL 3 OF 4

APP'D BY:

DATE:

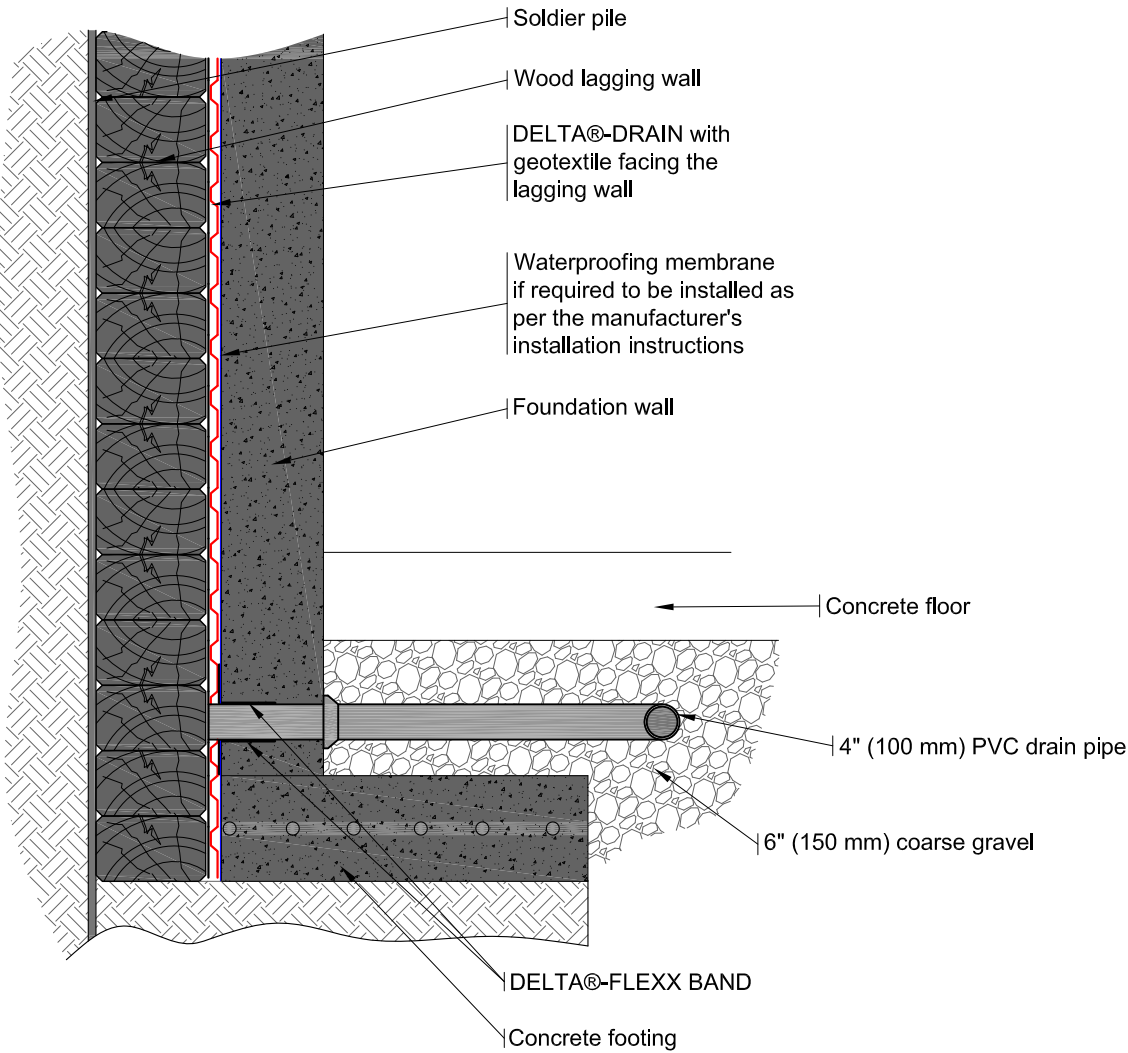
DRAWN BY: KRZYSZTOF APRIASZ.

DATE: October 5, 2011

SCALE: NTS

FILE NAME: DELTA-DRAIN_6b.dwg

DETAIL "E" BOTTOM OF WALL DETAIL



THIS DRAWING AND THE INFORMATION CONTAINED ARE THE PROPERTY OF COSELLA-DÖRKEN. THEY ARE NOT TO BE COPIED OR USED IN ANY WAY WITHOUT OUR WRITTEN PERMISSION

COSELLA DÖRKEN

4655 DELTA WAY BEAMSVILLE, ON. L0R 1B4 CANADA
TEL# 1-888-433-5824 OR 1-905-563-3255

THIS IS A PROPOSAL DRAWING. DO NOT USE FOR CONSTRUCTION UNTIL APPROVED BY CONTRACTOR OR CONSULTING ENGINEER

TITLE:
**TYPICAL SOLDIER PILE WALL WITH DELTA®-DRAIN
INSTALLATION DETAIL 4 OF 4**